



physician for review and discussion with you.

Is the Target Now test covered by my insurance?

The Target Now test is reimbursed by Medicare and other insurance providers. Caris Dx will bill your insurance company for Target Now testing and you may only be responsible for the co-payments or deductibles that we are required to bill by law.

Can I have Target Now testing run in the future if my doctor chooses not to order it now?

Yes, as noted above, Caris Dx can work with you or your doctor to get tissue from a previous biopsy or to have your fresh/frozen tissue stored appropriately for future testing at our facility. Make sure that you ask your doctor about having your tissue sent for storage even if he or she decides that Target Now testing isn't appropriate for you today. This storage service is called the Horizon Program.

BOLD terms are defined in the Target Now Glossary, available at www.targetnow.com.

Target Now Testing is only available to medical professionals and cannot be ordered by patients. If you believe that you qualify or would like to investigate the opportunity of having Target Now testing performed, you should consult your treating physician. The information contained in this brochure is not intended as medical advice, and should not be relied upon as a substitute for consultations with qualified health professionals who are familiar with your individual medical needs.

This brochure is provided by Caris Diagnostics as an educational service for physicians and their patients

www.TargetNow.com

For questions about Target Now testing please call
800.901.5177



www.carisdx.com

©2008 Caris Diagnostics, Inc. All rights reserved. 08.08

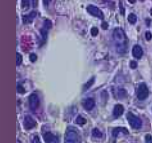
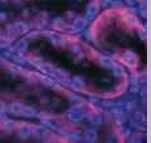


Accelerating the Delivery of Personalized Medicine



Every patient
is unique and so
is their cancer.

Find out more information about your cancer with **Target Now**,™ a testing service that helps provide a more detailed individual molecular 'blueprint' of your tumor.



Frequently Asked Questions for Patients

Please speak to your oncologist about whether Target Now is appropriate for you.

What is Target Now?

Scientific discoveries and technological breakthroughs have now made it possible to look at cancer more closely at a molecular level. Target Now utilizes an advanced molecular profiling analysis to provide a more detailed molecular 'blueprint' of your tumor to your physician.

Through advanced **DNA, RNA** and **protein** analysis, Target Now typically identifies multiple unique genes, gene expressions and proteins in your tumor. Additionally, Target Now provides information on associated drugs, including non-standard-of-care associations, that may potentially have greater efficacy or be resistant if these targets are present based on research publications and clinical studies. It is up to your physician to determine your appropriate treatment regimen.

What are the benefits of Target Now testing?

Target Now testing provides information that may help your physician when considering potential treatment options. Some of these treatment options may include new drugs called **targeted therapeutics** or **monoclonal antibody** (MAb) treatments. These are therapies that may be directed at one or more of the identified gene and protein 'targets' or 'markers' that may be identified by Target Now. Some of these agents may be available only through clinical trials.

How do I know if Target Now testing is right for me?

Target Now can be performed on any cancer type, including solid or non-solid tumors. Target Now may be most useful

for cancer patients when standard-of-care treatments are ineffective or are not available. Even if you may have already received treatment for your cancer, you can still have the test performed. However, your doctor should decide when to order the test.

What type of testing does Target Now provide?

Target Now tumor testing may include several analytical technologies, but primarily utilizes a panel of **DNA microarray analysis** and **immunohistochemistry** (IHC). DNA microarray analysis looks at which genes (DNA) are working or not in the unique cancer being analyzed. IHC detects specific proteins (part of the cancer's infrastructure) unique to a patient's tumor cells. In some cases, Target Now testing may also include **fluorescent in-situ hybridization** (FISH) and **gene sequencing**.

How are Target Now results reported?

These tests are summarized and integrated into a single report to help create a more detailed molecular 'blueprint' of your tumor for your physician. The report provides information for use by your treating doctor that, along with their clinical judgment, may help them with your treatment plan. Results are sent directly to your physician.

Is Target Now a diagnostic test?

No, a 'diagnostic' test determines whether someone may have a particular disease or medical condition. Target Now testing is typically performed once your doctor has already confirmed or diagnosed that you have some form of cancer.

Is Target Now the same as other tests that I've heard about that can tell my doctor whether my cancer could progress or if my family could have the same cancer?

No, these are called 'prognostic' tests. Prognostic tests help

your doctor determine if you or a family member are at risk for developing a particular condition or cancer, or if there is a risk that there could be a recurrence or aggressive form of a disease or cancer. For example, the test that detects a woman's risk, or her female family member's risk, of developing breast or ovarian cancer by looking at changes in two genes (the BRCA1 and BRCA2 genes) is one of these tests. Rather, the Target Now test provides additional molecular information to potentially assist your doctor in the management of your cancer.

What does my doctor need from me to perform the test?

Target Now is performed on tissue that is obtained during the surgical removal of your tumor (**biopsy or excision**) or from a sample collected during a **bone marrow aspirate biopsy**. Even if your doctor doesn't feel a need to order Target Now testing at this time, the hospital where your biopsy was performed will typically store some of your tissue as standard procedure. Now or in the future, your doctor can request that Target Now testing be run and coordinate with the hospital to have your sample sent to us.

Where will my testing be performed?

Target Now testing is performed at the Caris Dx laboratory located in Phoenix, Arizona. Caris Dx provides world-class diagnostic services (anatomic pathology and molecular diagnostics) nationwide to thousands of patients every week. The laboratory is **CLIA** certified and staffed by licensed technologists and physicians.

When will my Target Now results be ready?

Once we receive your sample, the required forms and medical information, testing usually takes about five to ten working days. Your results will be provided directly to your